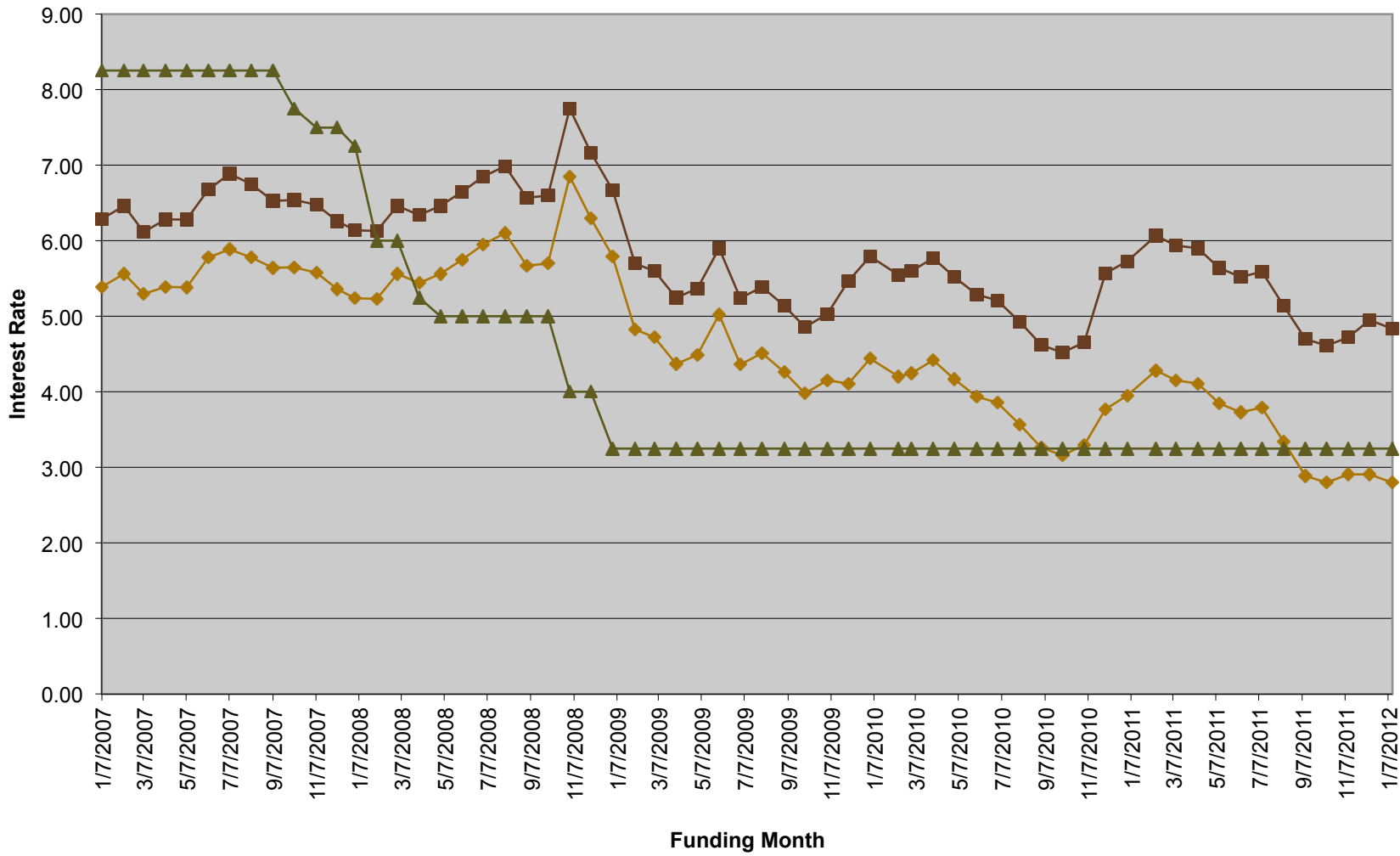


Utah CDC SBA 504 Interest Rate History

◆ Note Rate ■ Effective Rate ▲ Prime



Utah CDC: SBA 504 Interest Rate History

Compared to Prime Rate

	Note Rate	Effective Rate	Prime
Jan-12	2.80	4.84	3.25
Dec-11	2.91	4.95	3.25
Nov-11	2.91	4.72	3.25
Oct-11	2.80	4.61	3.25
Sep-11	2.89	4.70	3.25
Aug-11	3.34	5.14	3.25
Jul-11	3.79	5.59	3.25
Jun-11	3.73	5.52	3.25
May-11	3.85	5.64	3.25
Apr-11	4.11	5.90	3.25
Mar-11	4.15	5.94	3.25
Feb-11	4.28	6.07	3.25
Jan-11	3.95	5.73	3.25
Dec-10	3.77	5.57	3.25
Nov-10	3.30	4.66	3.25
Oct-10	3.16	4.52	3.25
Sep-10	3.26	4.62	3.25
Aug-10	3.57	4.93	3.25
Jul-10	3.86	5.21	3.25
Jun-10	3.94	5.29	3.25
May-10	4.17	5.52	3.25
Apr-10	4.42	5.77	3.25
Mar-10	4.25	5.60	3.25
Feb-10	4.20	5.55	3.25
Jan-10	4.44	5.79	3.25
Dec-09	4.11	5.47	3.25
Nov-09	4.15	5.03	3.25
Oct-09	3.98	4.86	3.25
Sep-09	4.26	5.14	3.25
Aug-09	4.51	5.39	3.25
Jul-09	4.36	5.24	3.25
Jun-09	5.02	5.90	3.25
May-09	4.49	5.37	3.25
Apr-09	4.37	5.25	3.25
Mar-09	4.72	5.60	3.25
Feb-09	4.83	5.70	3.25
Jan-09	5.79	6.67	3.25

Utah CDC: SBA 504 Interest Rate History

Compared to Prime Rate

Dec-08	6.30	7.17	4.00
Nov-08	6.85	7.75	4.00
Oct-08	5.70	6.60	5.00
Sep-08	5.67	6.57	5.00
Aug-08	6.10	6.99	5.00
Jul-08	5.95	6.85	5.00
Jun-08	5.75	6.65	5.00
May-08	5.56	6.46	5.00
Apr-08	5.44	6.34	5.25
Mar-08	5.56	6.46	6.00
Feb-08	5.23	6.13	6.00
Jan-08	5.24	6.14	7.25
Dec-07	5.36	6.26	7.50
Nov-07	5.58	6.48	7.50
Oct-07	5.65	6.54	7.75
Sep-07	5.64	6.53	8.25